

ProLineXL System Specifications

| PLATFORM LENGTH | 20' L X 90" W | 22' L X 90" W |
|---|------------------------|------------------|
| | Part Number | Part Number |
| 2 Air/Hydraulic Towers | 1060-20XL | 1060-22XL |
| 2 Central Electric Towers | 1060-20XLCE | 1060-22XLCE |
| Lifting Capacity | 10,000 lb. | 10,000 lb. |
| Treadway Width | 29" (736.60 mm) | 29" (736.60 mm) |
| Center Opening | 32" (812.80 mm) | 32" (812.80 mm) |
| Width with Towers on Each Side | 12' 6" (3810 mm) | 12' 6" (3810 mm) |
| Length with Towers on Each End | 25' (7620 mm) | 27' (8229.60 mm) |
| Length with Ramps | 23' (7010.40 mm) | 25' (7620 mm) |
| Tower Height From Top of Platform | 75" (1905 mm) | 75" (1905 mm) |
| From Top of Platform, Extended | 83" (2108.20 mm) | 83" (2108.20 mm) |
| Maximum Pull Height | 65" (1651 mm) | 65" (1651 mm) |
| Hydraulics | 10-Ton | 10-Ton |
| Hydraulic Electric Power Supply / U.S. | 115V, 10 AMP | 115V, 10 AMP |
| Working Height (8 working heights) | 17"- 40" | 17"- 40" |
| 17", 22-1/2", 26", 29-1/2", 32-1/4", 35", 37-3/4", 40" (431.80-1016 mm) | | |
| Weight | 7,800 lbs. | 8,200 lbs. |

Optional System Accessories



- 44 PRO Accessory Group #1675**
- 1580 (2) 3/8" x 10' HD Chain w/Grab Hook
 - 1605 (1) GM R-Hook w/ 3/8" x 6" Chain (6306)
 - 1609 (1) Ford T-Hook w/ 3/8" x 6" Chain (6311)
 - 1730 (1) Model B Metal Clamp (0100)
 - 1740 (1) Model C Metal Clamp (0200)
 - 1760 (1) Model Junior Metal Clamp (0300)
 - 1795 (1) Frame Rack Unibody Clamp (4010)
 - 1811 (1) Regular Deep Hook Set (6400)
 - 1820 (1) Tac-N-Pull Clamp (0800)
 - 1834 (1) Cable Sling (6350)
 - 1835 (1) Nylon Sling (6300)
 - 1853 (1) Panel Puller (1250)
 - 1932 (1) Sill Hook (1300)
 - 2002 (1) Many-Hole Wide Draw Bar (4048)
- Sheetmetal Hooks**
- 2005 (1) SM. Roundnose (3120)
 - 2006 (1) LG. Roundnose (3140)
 - 5090 (1) Tool Board with Hooks



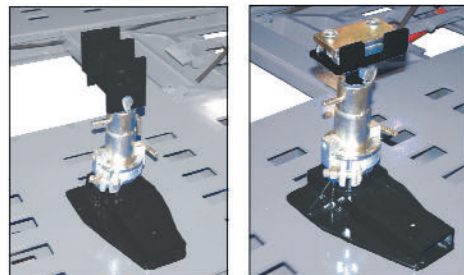
3 Bag Air Jack #5004
Jack w/Oak Block #5006



Roof & Engine Pull #2061



Down Pull Assembly #4069



Universal Truck Holding System
#6067-PROLINE

Provides rock solid anchoring while eliminating the sway and movement of chain type anchoring. Includes four heavy-duty base stands with height adjustable, multi-angle clamp fixtures for both Box and "C" channel type frames.

ProLineXL



TOUGH TO BEAT.

It can only be a
GRABBER
R.G. GRABBER, INC.

GRABBER
R.G. GRABBER, INC.

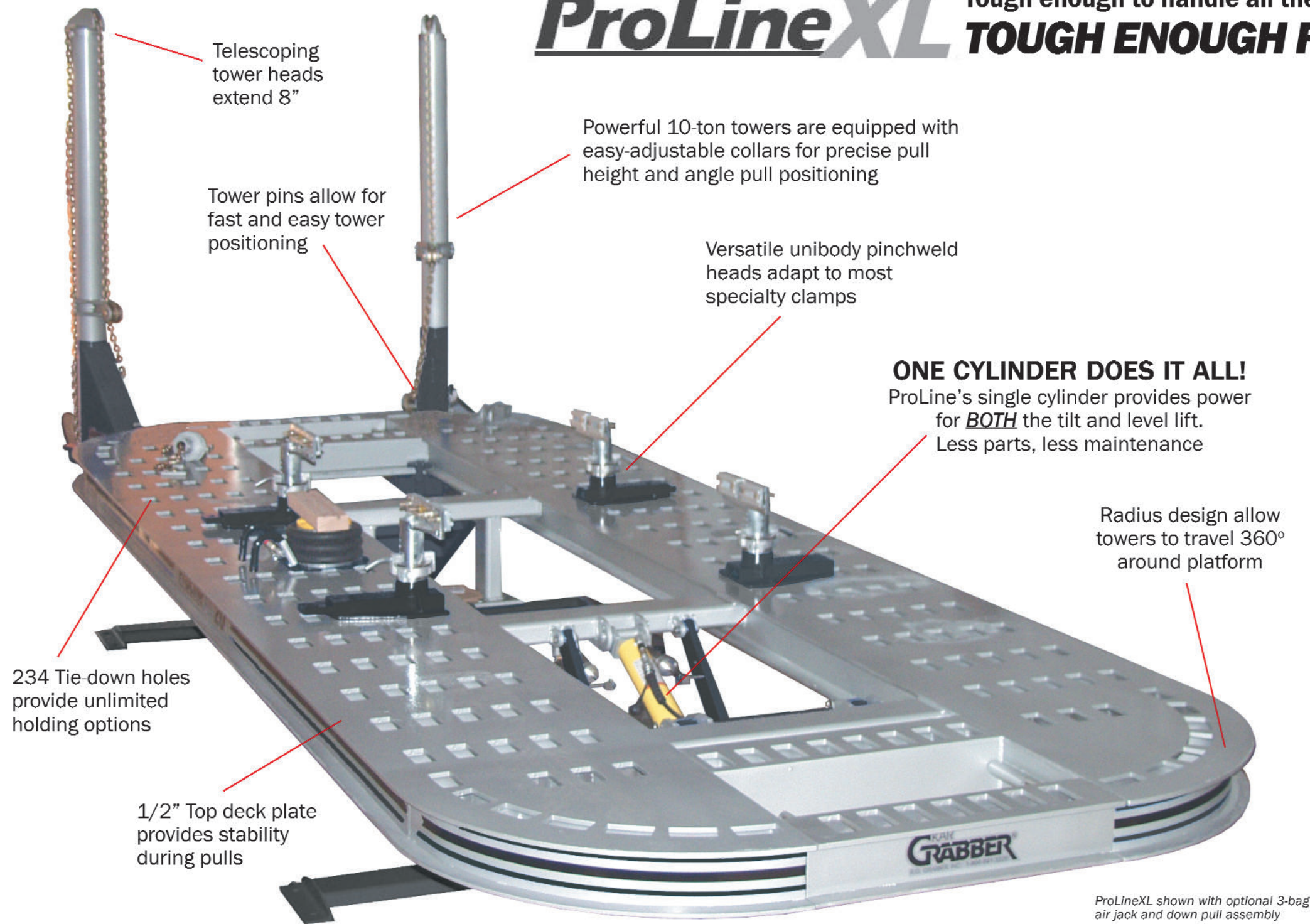
Consistent Quality • Stronger Equipment • Maximum Performance Pull after Pull
Built Grabber Tough • Backed by Grabber • Committed to the Industry

CALL 800-841-3220

310 Sterling Industrial Road • Brunswick GA • 31525 • www.grabber.com • email: sales@grabber.com

ProLineXL **Tough enough to handle all the traffic from full frames to long bed trucks - even dualies.**

TOUGH ENOUGH FOR PROFESSIONALS.



Telescoping tower heads extend 8"

Tower pins allow for fast and easy tower positioning

Powerful 10-ton towers are equipped with easy-adjustable collars for precise pull height and angle pull positioning

Versatile unibody pinchweld heads adapt to most specialty clamps

ONE CYLINDER DOES IT ALL!
ProLine's single cylinder provides power for **BOTH** the tilt and level lift. Less parts, less maintenance

Radius design allow towers to travel 360° around platform

234 Tie-down holes provide unlimited holding options

1/2" Top deck plate provides stability during pulls

ProLineXL shown with optional 3-bag air jack and down pull assembly

Standard Components

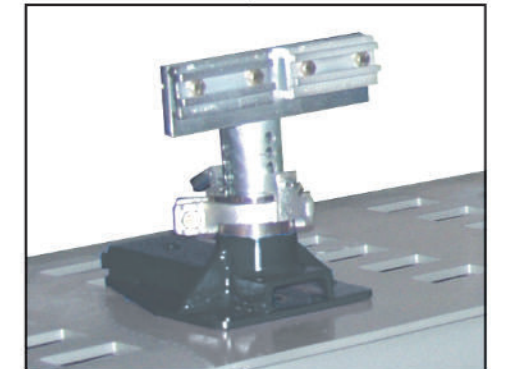
- 20XL 20' x 90"
- 22XL 22' x 90"
- (2) ProLine 10-Ton Pull Towers w/Ram
- (1) Air Hydraulic Pump w/Hose (lift)*
- (1 per tower) Air/Hydraulic Pump w/Hose & Gauge*
- (1 per tower) 3/8" x 14' Heavy Duty Chain w/Slip Hook
- (1 per tower) Safety Cable w/Hook
- (1 per tower) Pump Tray*
- (2) Removable Crossmembers
- Universal Clamping System, Height Adjustable (Set of 4)
- ProLine Short Ramps (Set of 2)

**Air Pumps/trays are excluded with electric option*

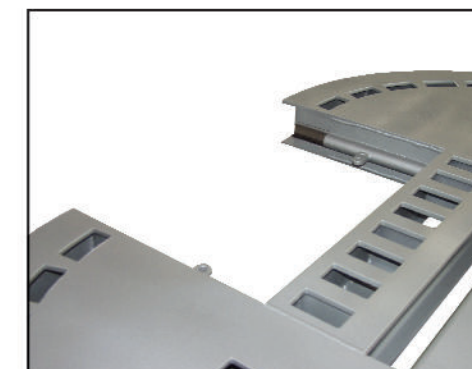
Level-lift provides eight comfortable working positions ranging from 17"- 40"



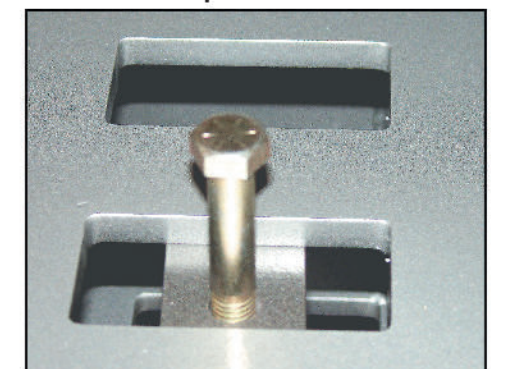
Height adjustable clamping system securely anchors vehicle to rack platform



Crossmember on each end removes easily providing technician with under vehicle access



Tie downs install from the top of the deck for a fast, easy, no-hassle set-up



Not all racks are created equal

- ProLine's 6" deck boasts a top plate engineered stronger. Standing up to any pull.
- 90" Wide deck provides plenty of space for all makes and models.
- Available in 20' and 22' deck lengths.

- 10-Ton pull towers - *Your choice* Air or Electric hydraulics.
- 25-Ton single cylinder operates tilt and level-lift.
- Level-lift equipped with automatic safety locks (air operated) for technician safety.
- Want additional towers? Just add them!
- Made in the U.S.A.