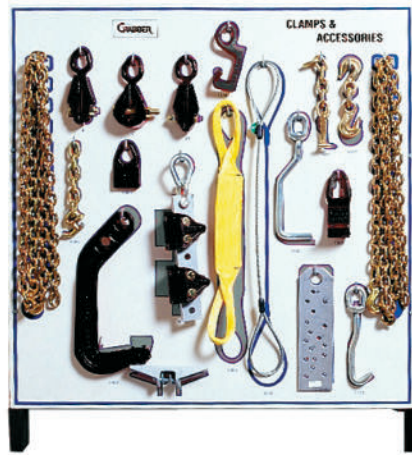


The Winner Series

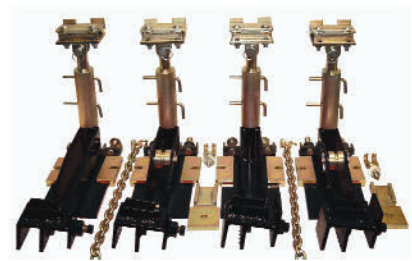
System Specifications

PLATFORM LENGTH	18' L X 90" W Part Number	20' L X 90" W Part Number
2 Air/Hydraulic Towers, Single Height	1072-18CC	1072-20CC
High Rise Model	1072-18CCHR	1072-20CCHR
2 Central Elec. Towers, Single Height	1072-18-CE	1072-20-CE
High Rise Model	1072-18HR-CE	1072-20HR-CE
Lifting Capacity	10,000 lb.	10,000 lb.
Treadway Width	29" (736.60 mm)	29" (736.60 mm)
Center Opening	32" (812.80 mm)	32" (812.80 mm)
Width with Towers on Each Side	12' 6" (3810 mm)	12' 6" (3810 mm)
Length with Towers on Each End	23' (7010.40 mm)	25' (7620 mm)
Length with Ramps	23' (7010.40 mm)	25' (7620 mm)
Tower Height From Top of Platform	75" (1905 mm)	75" (1905 mm)
From Top of Platform, Extended	83" (2108.20 mm)	83" (2108.20 mm)
Maximum Pull Height	65" (1651 mm)	65" (1651 mm)
Hydraulics	10-Ton	10-Ton
Hydraulic Electric Power Supply / U.S.	115V, 10 AMP	115V, 10 AMP
Working Height	20" (508 mm)	20" (508 mm)
High Rise Models (8 working heights)	14" - 40"	14" - 40"
	14", 22-1/2", 26", 29-1/2", 32-1/4", 35", 37-3/4", 40" (355.60-1016 mm)	
Weight, Single Height Model	4,400 lbs.	4,600 lbs.
High-Rise Model	4,800 lbs.	5,400 lbs.

Optional System Accessories



- 44 PRO Accessory Group #1675**
- 1580 (2) 3/8" x 10' HD Chain w/Grab Hook
 - 1605 (1) GM R-Hook w/3/8"x6" Chain (6306)
 - 1609 (1) Ford T-Hook w/3/8"x6" Chain (6311)
 - 1730 (1) Model B Metal Clamp (0100)
 - 1740 (1) Model C Metal Clamp (0200)
 - 1760 (1) Model Junior Metal Clamp (0300)
 - 1795 (1) Frame Rack Unibody Clamp (4010)
 - 1811 (1) Regular Deep Hook Set (6400)
 - 1820 (1) Tac-N-Pull Clamp (0800)
 - 1834 (1) Cable Sling (6350)
 - 1835 (1) Nylon Sling (6300)
 - 1853 (1) Panel Puller (1250)
 - 1932 (1) Sill Hook (1300)
 - 2002 (1) Many-Hole Wide Draw Bar (4048)
 - Sheetmetal Hooks
 - 2005 (1) SM. Roundnose (3120)
 - 2006 (1) LG. Roundnose (3140)
 - 5090 (1) Tool Board with Hooks



Universal Truck Holding System #6067-2B
 Provides rock solid anchoring while eliminating the sway and movement of chain type anchoring. Includes four heavy-duty base stands with height adjustable, multi-angle clamp fixtures for both Box and "C" channel type frames. (Set of 4)



3 Bag Air Jack #5004
Jack w/Oak Block #5006



Roof & Engine Pull #2061



Down Pull Assembly #4069
 For channeled treadway racks



The Winner Series



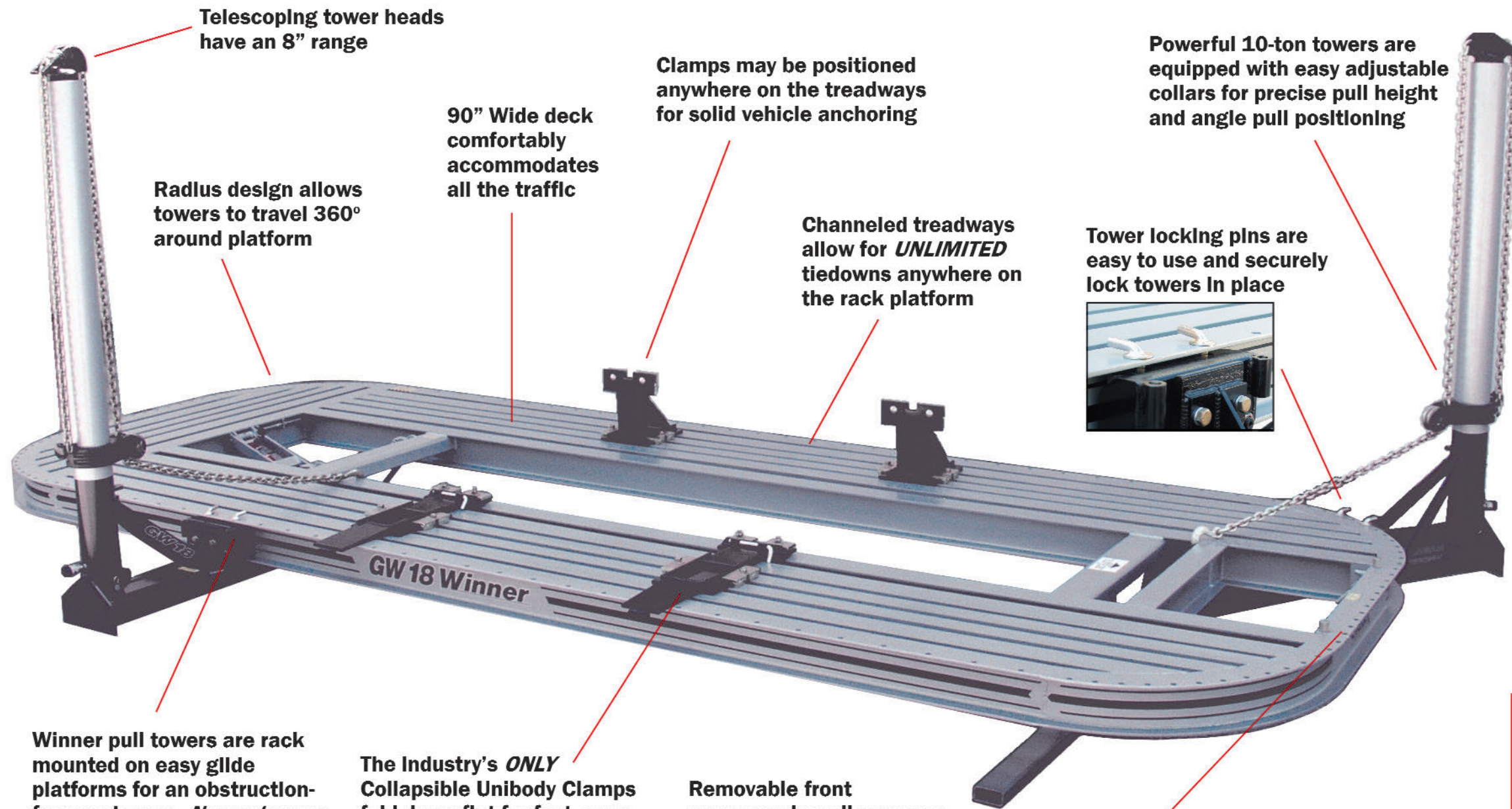
Consistent Quality • Stronger Equipment • Maximum Performance Pull after Pull
Built Grabber Tough • Backed by Grabber • Committed to the Industry

CALL 800-841-3220

310 Sterling Industrial Road • Brunswick GA • 31525 • www.grabber.com • email: sales@grabber.com

For Quality, Productivity and Profits - This is the Winner!

Ideal for efficient, profitable repairs to unibodies, full-frames & SUV's on the road today



Telescoping tower heads have an 8" range

Radius design allows towers to travel 360° around platform

90" Wide deck comfortably accommodates all the traffic

Clamps may be positioned anywhere on the treadways for solid vehicle anchoring

Channeled treadways allow for **UNLIMITED** tiedowns anywhere on the rack platform

Powerful 10-ton towers are equipped with easy adjustable collars for precise pull height and angle pull positioning

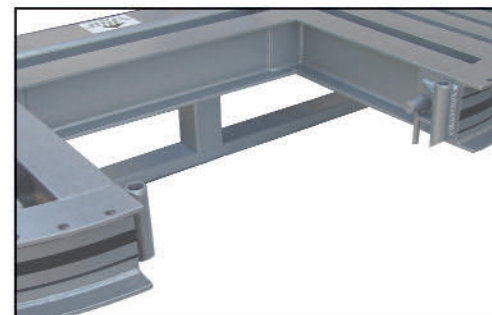
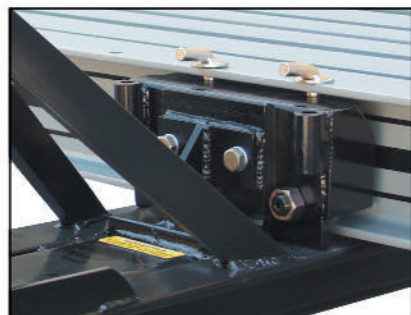
Tower locking pins are easy to use and securely lock towers in place



Winner pull towers are rack mounted on easy glide platforms for an obstruction-free workzone - **No casters or wheels**

The Industry's **ONLY** Collapsible Unibody Clamps fold down flat for fast, easy, no-hassle vehicle loading

Removable front crossmember allows easy under-carriage access



KAR GRABBER
R.G. GRABBER, INC.

The Winner Series

The right Winner for every shop

- GW18 18' X 90"
- GW20 20' X 90"

Air or Electric Hydraulics

Add more performance features

Winner High-Rise

Optional level lift raises and locks platform at eight convenient working positions (14" to 40" from floor) for easy access to all makes and models.



Need a customized Winner?
Just Ask!

Standard Components

- (2) Winner 10-Ton Pull Towers w/Ram
- (1) Air Hydraulic Pump w/Hose (tilt or level lift)*
- (1 per tower) Air/Hydraulic Pump w/Hose & Gauge*
- (1 per tower) 3/8" x 14' Heavy Duty Chain w/Slip Hook
- (1 per tower) Safety Cable w/Hook
- (1 per tower) Pump Tray*
- (1) Removable Crossmember
- Collapsible Unibody Clamps (Set of 4)
- Winner Ramps (Set of 2)

*Air Pumps/trays are excluded with electric option