

QUANTUM™ PARTS JAMMING TUNNELS

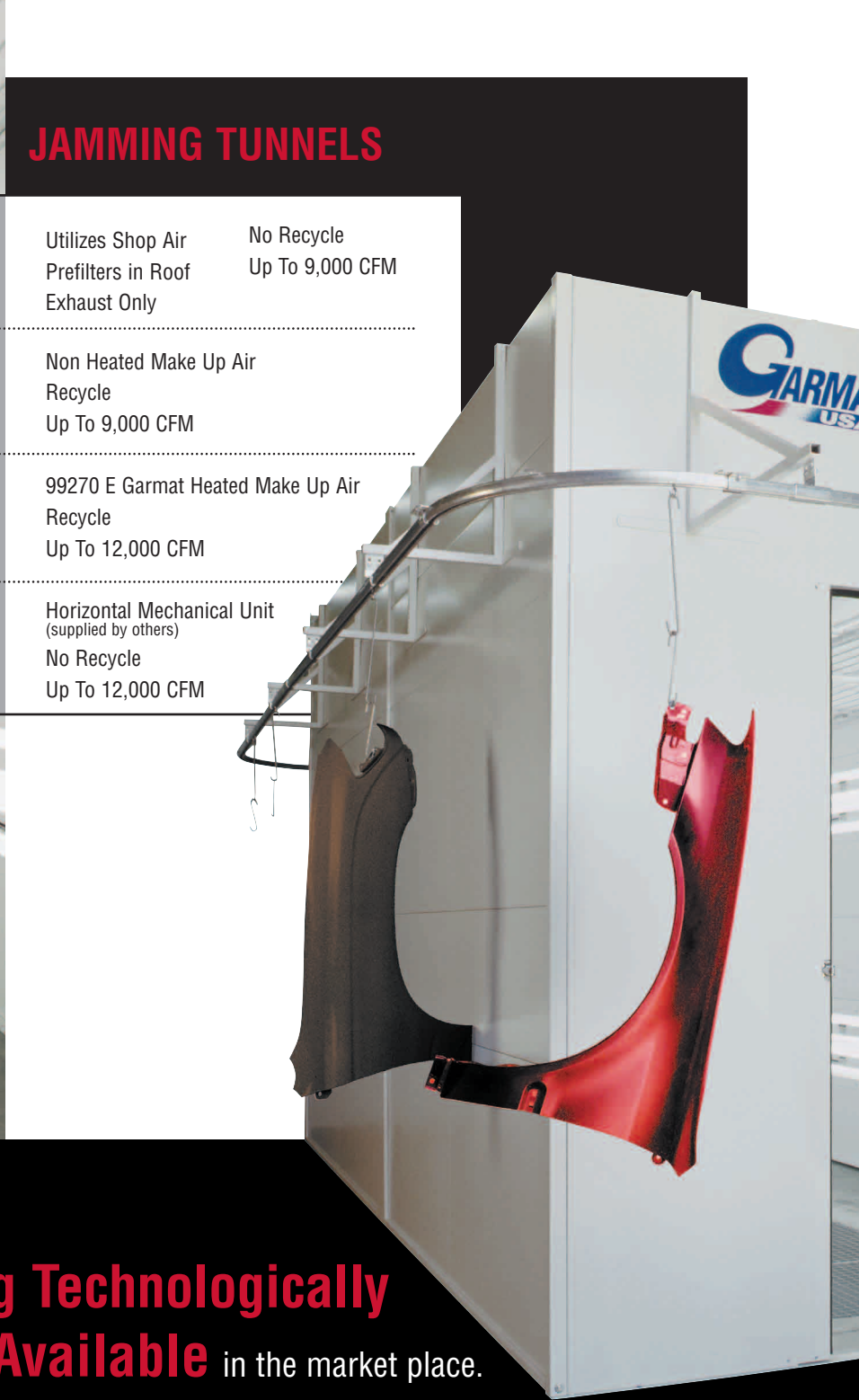




# QUANTUM™

## JAMMING TUNNELS

10910	Utilizes Shop Air Prefilters in Roof Exhaust Only	No Recycle Up To 9,000 CFM
10920	Non Heated Make Up Air Recycle Up To 9,000 CFM	
10930	99270 E Garmat Heated Make Up Air Recycle Up To 12,000 CFM	
10940	Horizontal Mechanical Unit (supplied by others) No Recycle Up To 12,000 CFM	



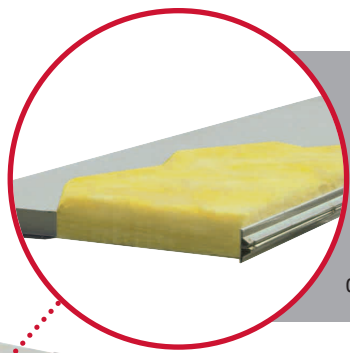
Garmat's pledge is to bring you

**The Most Dependable, Long Lasting Technologically Advanced Equipment Available** in the market place.

# JAMMED WITH FEATURES

## INSULATED WALL PANELS

The Quantum™ cabin is constructed of durable powder coated, fully insulated solid interlocking wall panels. The panels are designed to prevent heat loss into the surrounding shop and for greater efficiency during the bake cycle.



If you are looking for a way to increase productivity in your paint shop, the Garmat® Quantum™ Parts Jamming Tunnel can help accomplish just that. With the Garmat® Quantum™, you are provided with a downdraft environment for refinishing parts. The Quantum™ comes standard with a closed loop rail system, four 4-tube interior accessible light fixtures, your choice of air make up system (see opposite page), and inground pit. Additional light fixtures, additional cabin lengths and wheeled push carts (supplied by others) are available options.

## EASY ACCESS FILTERS

The Quantum™ is equipped with premium quality filters. High quality filtration is the first step to a clean paint job. Ceiling filter racks are designed to allow for ease of replacement.



## INTERIOR ACCESSIBLE LIGHTING

Garmat® USA utilizes only the best in T8 color corrected fluorescent bulbs. Each Quantum™ is equipped with 4 – four tube interior accessible fixtures.



Garmat is very proud to say that our equipment is manufactured in the USA. This allows our equipment to be customized to meet almost any situation with greater ease.



# QUANTUM™ PARTS JAMMING TUNNELS

The Garmat® USA Quantum™ is a full downdraft Jamming Tunnel that utilizes a closed loop rail system. This allows automobile parts to be hung with both sides of the part being easily accessible for refinishing. The Quantum™ comes standard with an in-ground pit. All units are equipped with ETL listed electrical panels.

## DIMENSIONS:

### Exterior:

Including Rail System:

14'-11<sup>1</sup>/<sub>4</sub>" W x 23'-7" L x 11'-<sup>1</sup>/<sub>2</sub>" H

Cabin: 9'-3<sup>1</sup>/<sub>2</sub>" W x 18'-2" L x 10'-10" H

### Interior:

Cabin: 8'-11<sup>1</sup>/<sub>2</sub>" W x 17'-9" L x 8'-4<sup>1</sup>/<sub>2</sub>" H

### Doors with observation windows:

(qty 2) – 3'-3<sup>5</sup>/<sub>8</sub>" W x 7'-11<sup>1</sup>/<sub>2</sub>" H

### Manual Rail System

## CONSTRUCTION

The cabin is constructed of durable powder coated, fully insulated interlocking wall panels.

## LIGHTING

Four - 4 tube interior accessible fixtures are standard. Additional fixtures are available.

## GRATES

Hot dipped galvanized grates.

## QUANTUM™ FILTRATION SYSTEM

**Pre-Filtration:** Reduces contamination of ceiling filters.

**Ceiling Filters:** Progressively structured, high density and high performance non-woven air filter medium.

**Extract Filters:** 2" fiberglass for economy of change and maximum particulate removal.

## PRESSURE GAUGE

Manometer accurately monitors resistance build up of filter system.

## ELECTRICAL SYSTEM

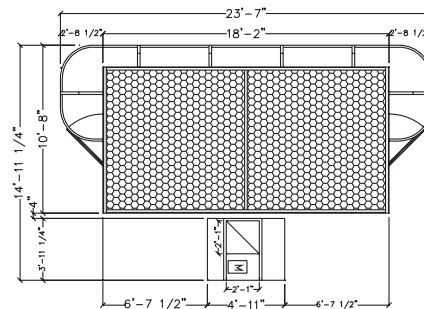
All components are recognized, listed, or certified by ETL, UL, CSA, or AGA.

## DOWNDRAFT AIR FLOW

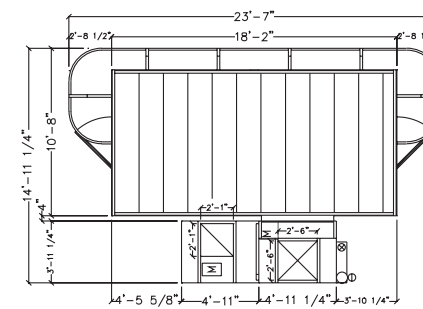
The downdraft air flow has been designed specifically to accommodate the spraying of hanging parts.

## FIRE SUPPRESSION

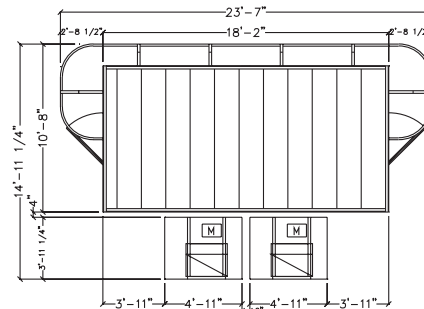
The Jamming Tunnel is designed for installation of fire suppression equipment (supplied by others).



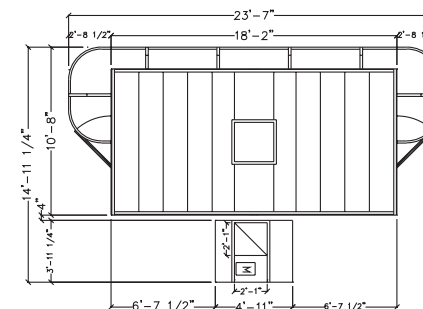
Model # 10910



Model # 10930



Model # 10920



Model # 10940



Garmat® USA reserves the right to modify or change any of the technical features mentioned in this brochure. ©2002 Garmat® USA